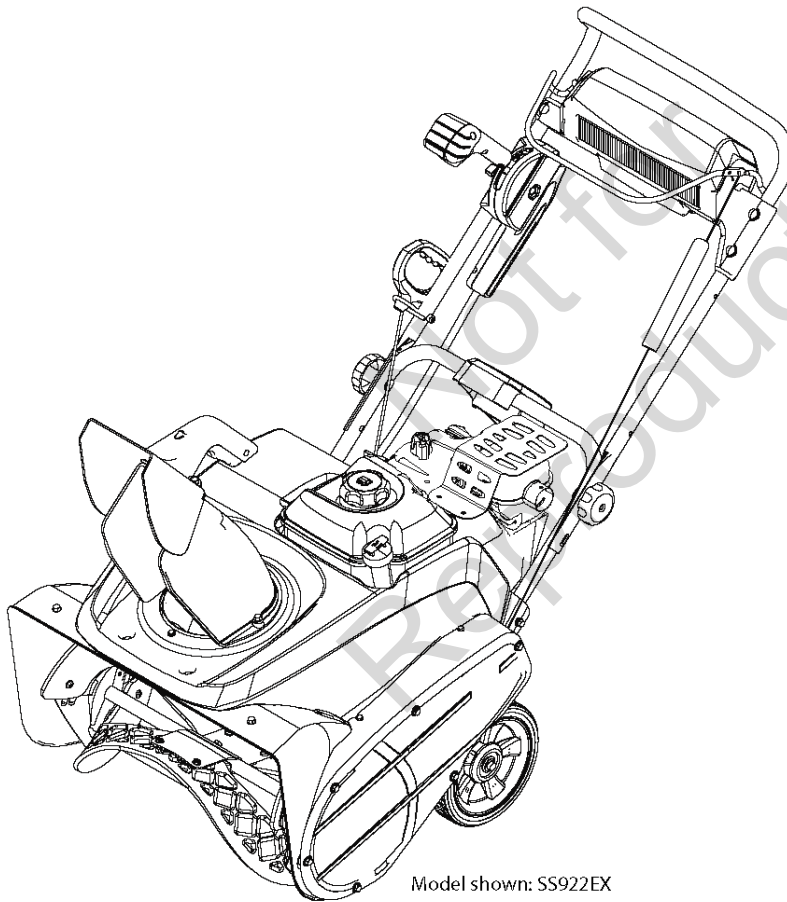


*Parts Manual for*

# **SNAPPER®**

## **SINGLE STAGE SNOW THROWER 22" 8TP & 9TP (2010)**

<i>Model No.</i>	<i>Description</i>
1695884	SN822EX
1695880	SS822E
1695881	SS822EX
1695882	SS922EX



Model shown: SS922EX

**Briggs & Stratton Yard Power Products Group**

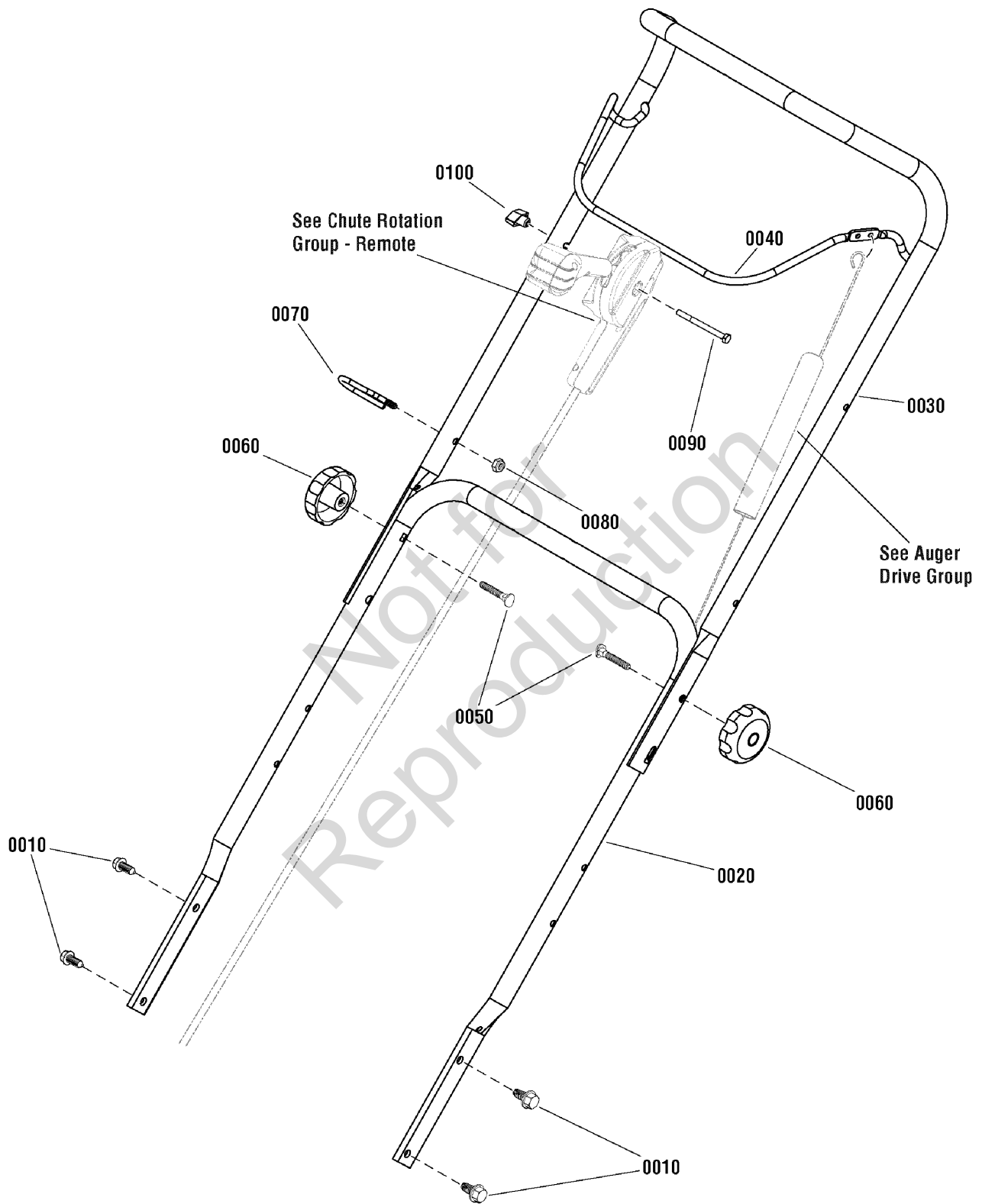
535 Macon Road  
McDonough, GA, 30253 U.S.A.  
800-935-2967

**Manual No.** 7104731  
**Revision:** - 8/24/2010

Not for  
Reproduction

<b>PAGE</b>	<b>GROUP</b>
4	Handles & Controls Group
6	Panel Group
8	Engine Group
10	Frame Group
12	Auger Group
14	Auger Drive Group
16	Chute Group - Manual
18	Chute Group - Remote
20	Chute Rotation Group - Manual
22	Chute Rotation Group - Remote
24	Wheel & Body Covering Group
26	Decals Group

Not for  
Reproduction



## Handles & Controls Group

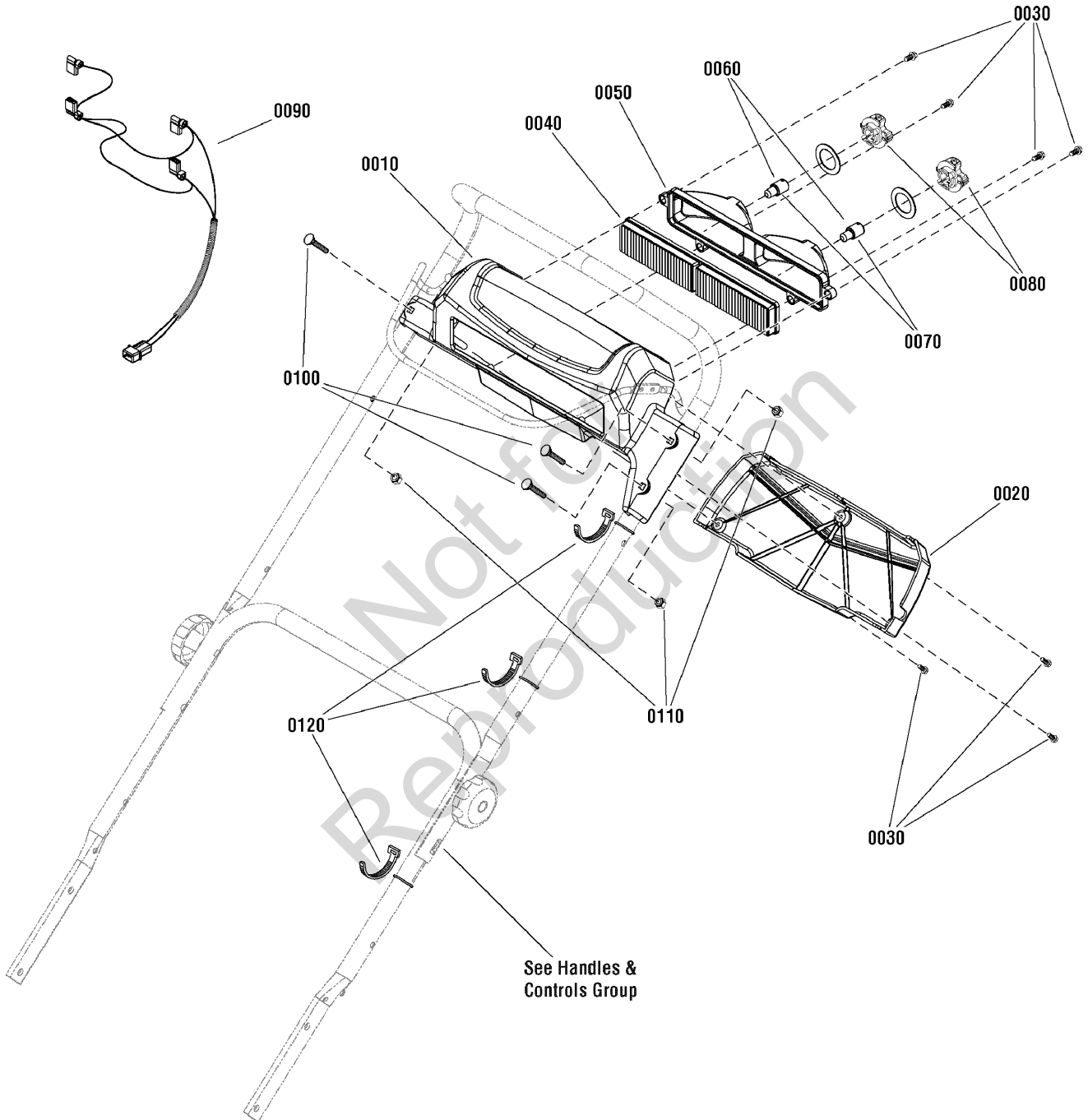
---

Item	Part No	Qty	Description
0010	1930601	4	SCREW, Hex Washer Head, Taptite, 5/16-18 x 5/8
0020	1739362A	1	HANDLEBAR, Lower
0030	1739363A	1	HANDLEBAR, Upper (8TP Models Only)
0030	1751172A	1	HANDLEBAR, Upper (9TP Models Only)
0040	1739361BN	1	BAIL, Engine Stop
0050	7091189	2	BOLT, Carriage, Curved Head, 5/16 x 2, G2
0060	721800	2	KNOB, Handle, 5/16-18
0070	1739389	1	GUIDE, Rope
0080	7091603	1	NUT, 1/4
0090	7091317	1	CAPSCREW, Hex Head, 1/4-20 x 3, G5 (Remote Models Only)
0100	194289	1	KNOB, Handle (Remote Models Only)

Not for  
Reproduction

### Footnotes:

# Panel Group



## Panel Group

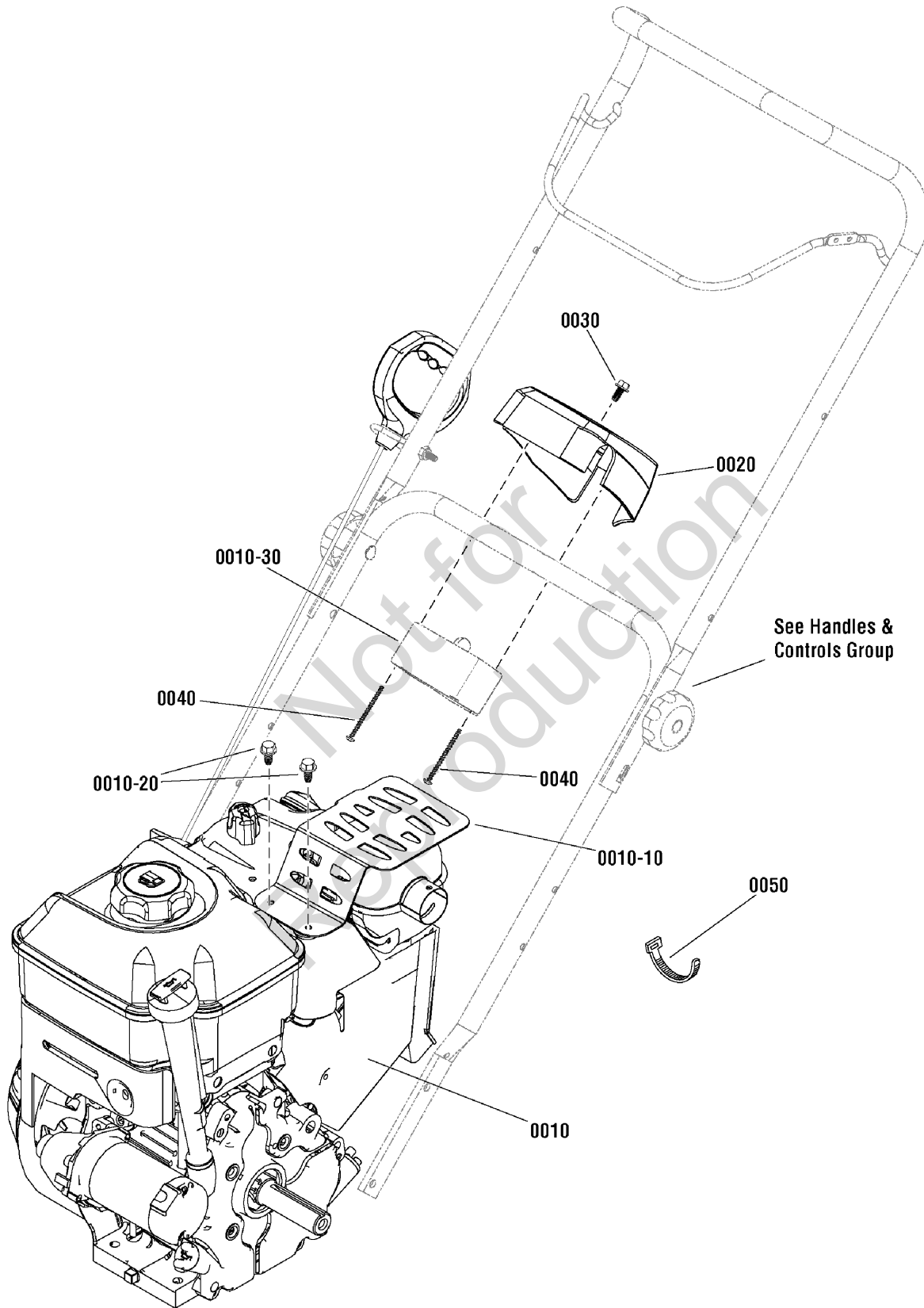
---

Item	Part No	Qty	Description
0010	1750728	1	* PANEL, Light (Applies to Mdl. SS922EX Pt. #1695882 only)
0020	1750875	1	* COVER, Light Panel (Applies to Mdl. SS922EX Pt. #1695882 only)
0030	7091105	7	* CAPSCREW, Hex Washer Head, #10-16 x 1/2 (Applies to Mdl. SS922EX Pt. #1695882 only)
0040	1736177	1	* LENS, Twin Light (Applies to Mdl. SS922EX Pt. #1695882 only)
0050	1736178	1	* DEFLECTOR, Twin Light (Applies to Mdl. SS922EX Pt. #1695882 only)
0060	1739689	2	* LAMP, Halogen. 12V 20W (Applies to Mdl. SS922EX Pt. #1695882 only)
0070	1736179	2	* GASKET, Single, Twin Light (Applies to Mdl. SS922EX Pt. #1695882 only)
0080	1736180	2	* SOCKET, Single, Twin Light (Applies to Mdl. SS922EX Pt. #1695882 only)
0090	1738286	1	* WIRING HARNESS, HeadLights (Applies to Mdl. SS922EX Pt. #1695882 only)
0100	1960633	3	* BOLT, Carriage, 1/4-20 x 1-1/2, GR 5 (Applies to Mdl. SS922EX Pt. #1695882 only)
0110	7091603	3	* NUT, Nylock, 1/4 (Applies to Mdl. SS922EX Pt. #1695882 only)
0120	720393	3	* CABLE TIE (Applies to Mdl. SS922EX Pt. #1695882 only)

Not for  
Reproduction

### Footnotes:

Note: \* All items on this page apply to model SS922EX Pt. #1695882 only





## Engine Group

---

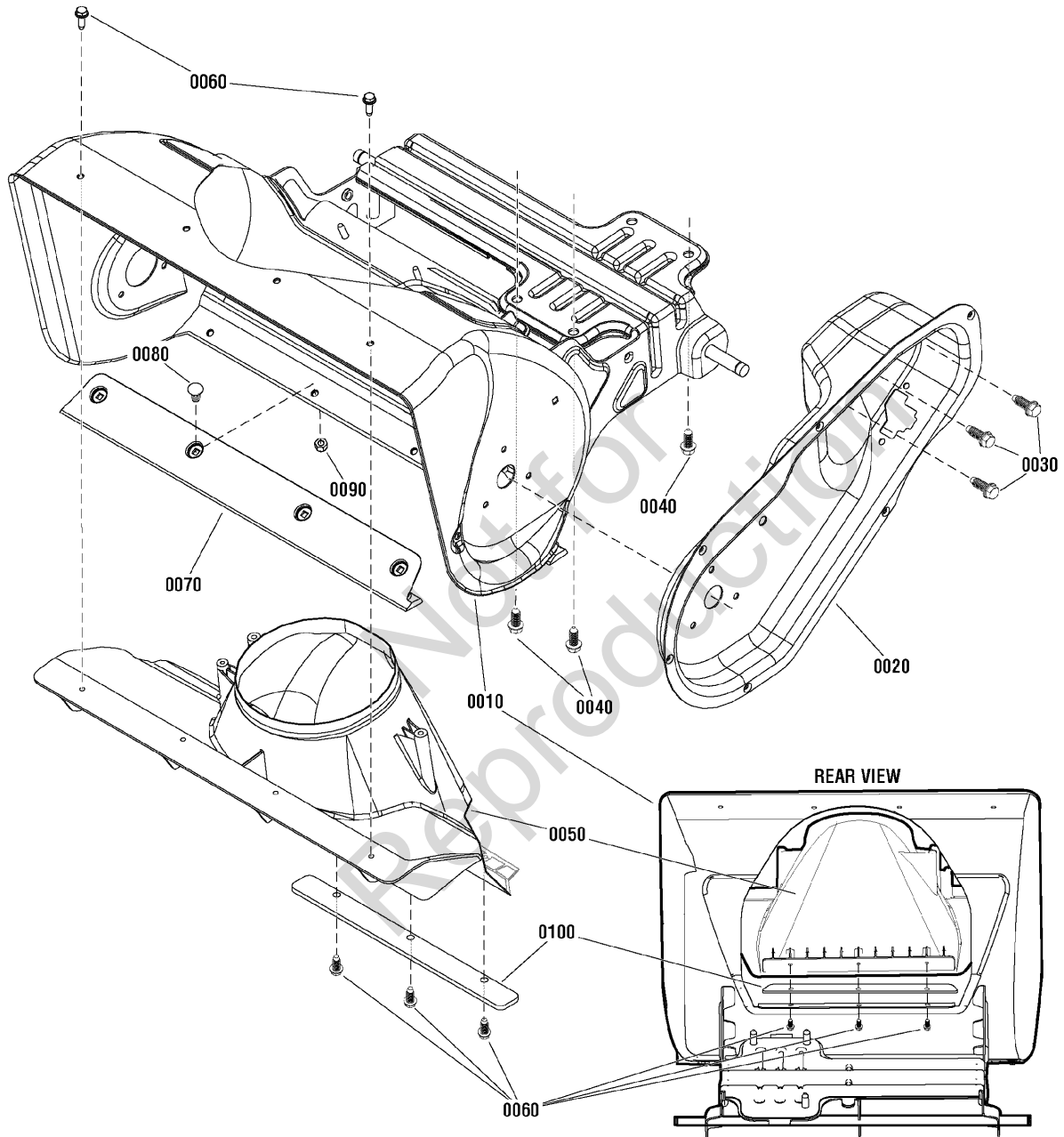
Item	Part No	Qty	Description
0010	12A103-0148-E8	1	* ENGINE, Briggs & Stratton, 8TP (Engine Model: 12A103-0148-E8)
0010	12A103-0147-E8	1	* ENGINE, Briggs & Stratton, 8TP (Engine Model: 12A103-0147-E8) (C/E Export Only)
0010	12D104-0135-E8	1	* ENGINE, Briggs & Stratton, 9TP (Engine Model: 12D104-0135-E8)
0010-10	799028	1	GUARD, Muffler
0010-20	699854	2	SCREW, Hex Washer Head, Muffler Guard
0010-30	-----	1	* STARTER, 110V
0010-30	-----	1	* STARTER, 230V (CE/Export Only)
0020	1750032	1	HOUSING, Starter, 110V
0020	1750033	1	HOUSING, Starter, 230V
0030	1750447	1	SCREW, Hex Washer Head, Trilob, 1/4-20 x 1/2
0040	1750593	2	SCREW, Pan Head Phillips, Plastite, 8-16 x 2-1/2
0040	1750592	2	SCREW, Pan Head Phillips, Plastite, 8-16 x 2-1/2 (CE/Export Only)
0050	720393	4	CABLE TIE, Black

Not for  
Reproduction

### Footnotes:

Note\* See your local Briggs & Stratton distributor for parts and service.

# Frame Group



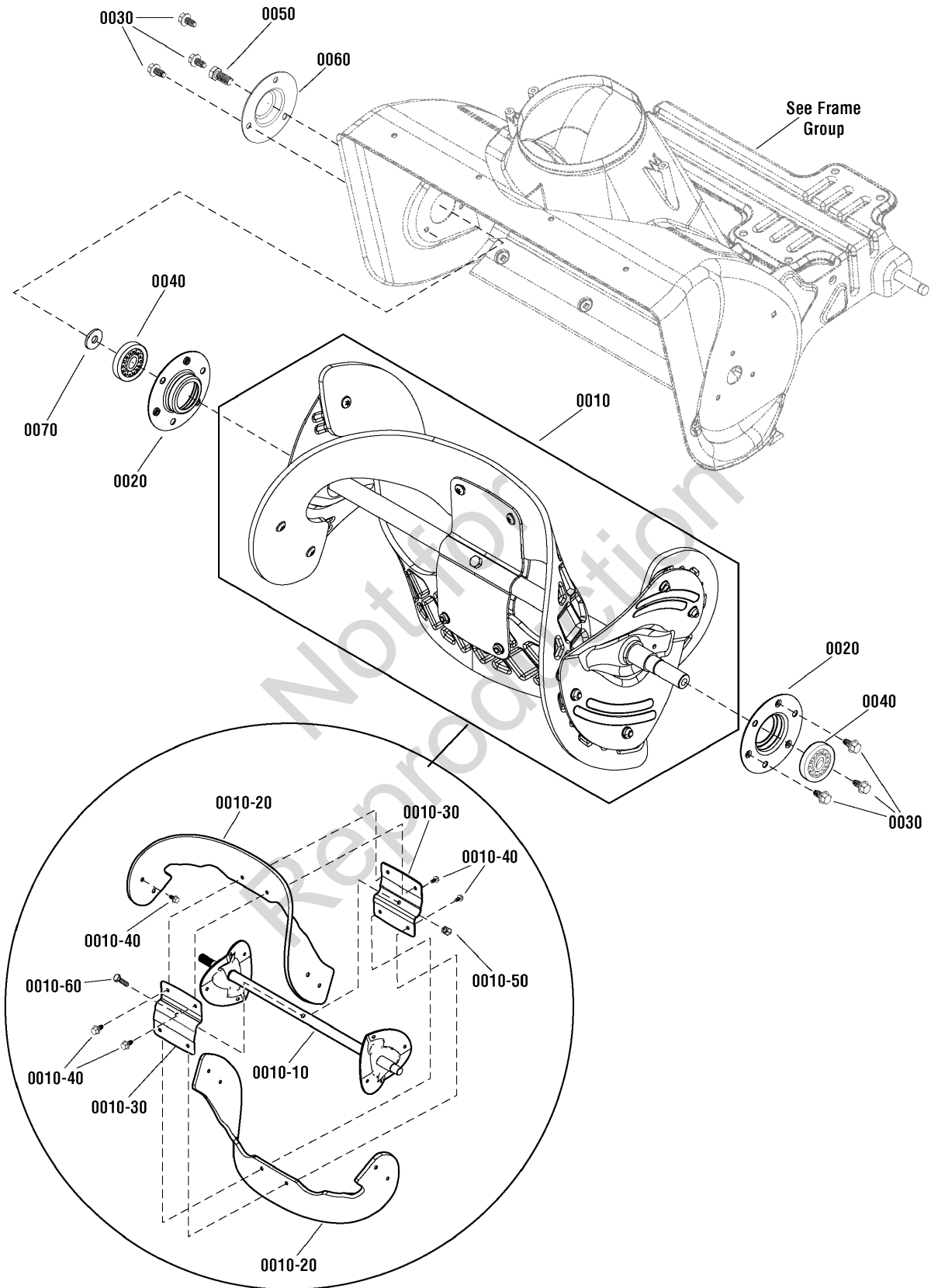
## Frame Group

---

Item	Part No	Qty	Description
0010	1739225A	1	FRAME ASSEMBLY
0020	1739100A	1	HOUSING, Drive
0030	1750443	3	BOLT, Serrated, 5/16-24 x 3/4
0040	2827187	3	SCREW, Hex Washer Head, Taptite, 3/8-16 x 1
0050	1739555	1	CHIMNEY
0060	1750444	5	SCREW, Hi-Low, 1/4-15 x 3/4
0070	1739231	1	SCRAPER BAR
0080	1931315	4	BOLT, Carriage, 1/4-20 x 1/2, G5
0090	725891	4	NUT, Nylock, Hex Jam, 1/4
0100	1751553BZ	1	SPACER, Chimney

Not for  
Reproduction

### Footnotes:



## Auger Group

---

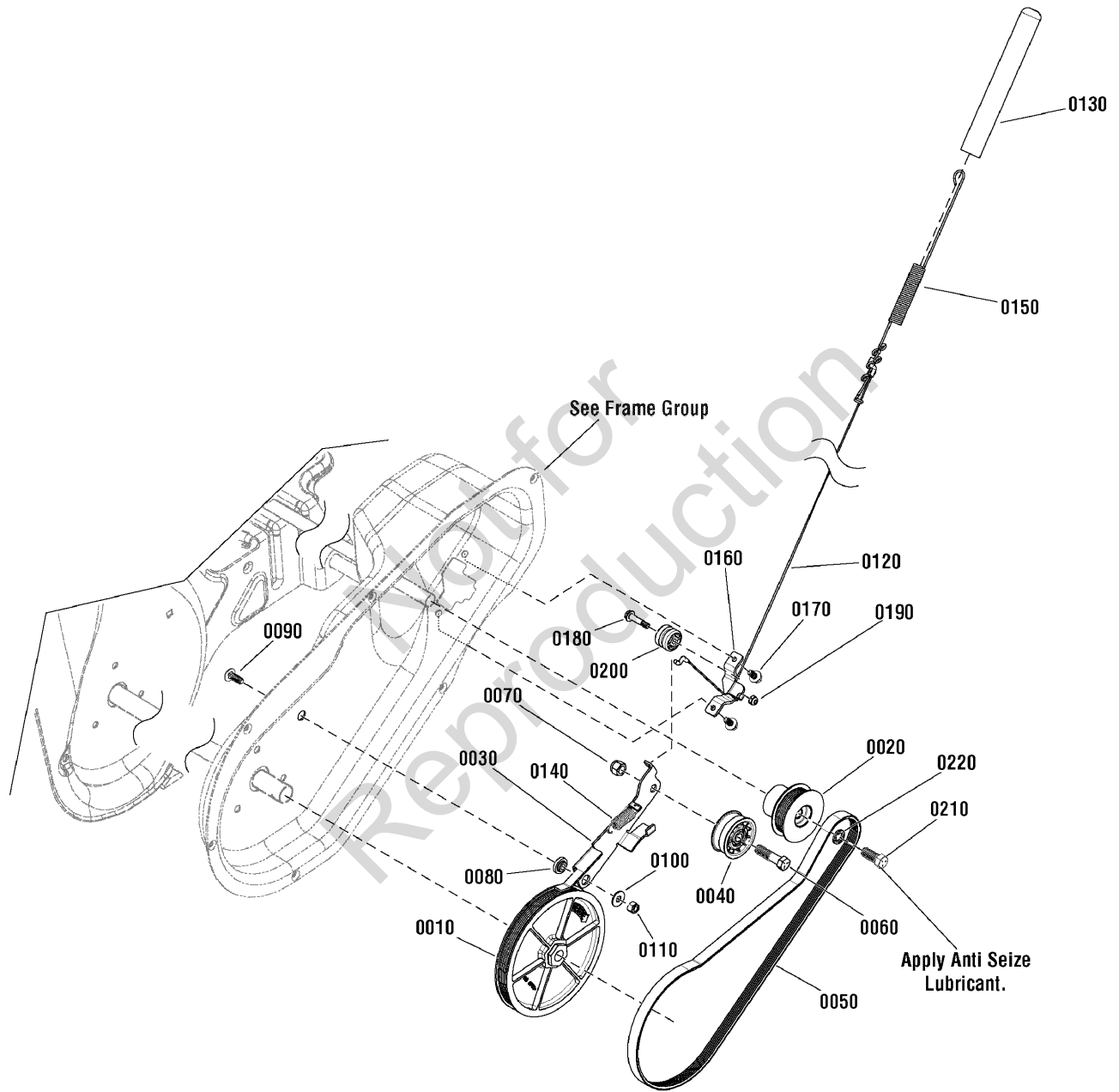
Item	Part No	Qty	Description
0010	1751388	1	AUGER ASSEMBLY, Complete (Incl. Ref. Nos. 0010-10, 0010-20, 0010-30, 0010-40, 0010-50 & 0010-60)
0010-10	1739724A	1	* AUGER SHAFT ASSEMBLY
0010-20	1739727	2	** FLIGHT, Auger
0010-30	1739729A	2	* PLATE, Auger, Center
0010-40	7090999	12	SCREW, Pan Head Torx 1/4 x 5/8
0010-50	7091603	1	NUT, Nylock, 1/4-20
0010-60	51374	1	CAPSCREW, Hex Head, 1/4-20 X 1 1/2, G5
0020	1739228	2	RETAINER, Bearing
0030	1750447	6	SCREW, Hex Washer Head, Trilob, 1/4-20 x 1/2
0040	1705897	2	BEARING, Ball, 11/16 x 1-9/16 x 15/32
0050	22142	1	CAPSCREW, Hex Head, 5/16-18 x 3/4
0060	1739229A	1	CAP, BEARING
0070	7900022	1	WASHER, Flat, 7/8 x 21/64
--	1687489	1	KIT, Auger Flight (Incl. Ref. Nos. 0010-20 & 0010-40)

Not for  
Reproduction

### Footnotes:

- \* Not a servicable part, order complete Auger Assembly.
- \*\* Not a servicable part, order Auger Flight Kit 1687489YP.

# Auger Drive Group



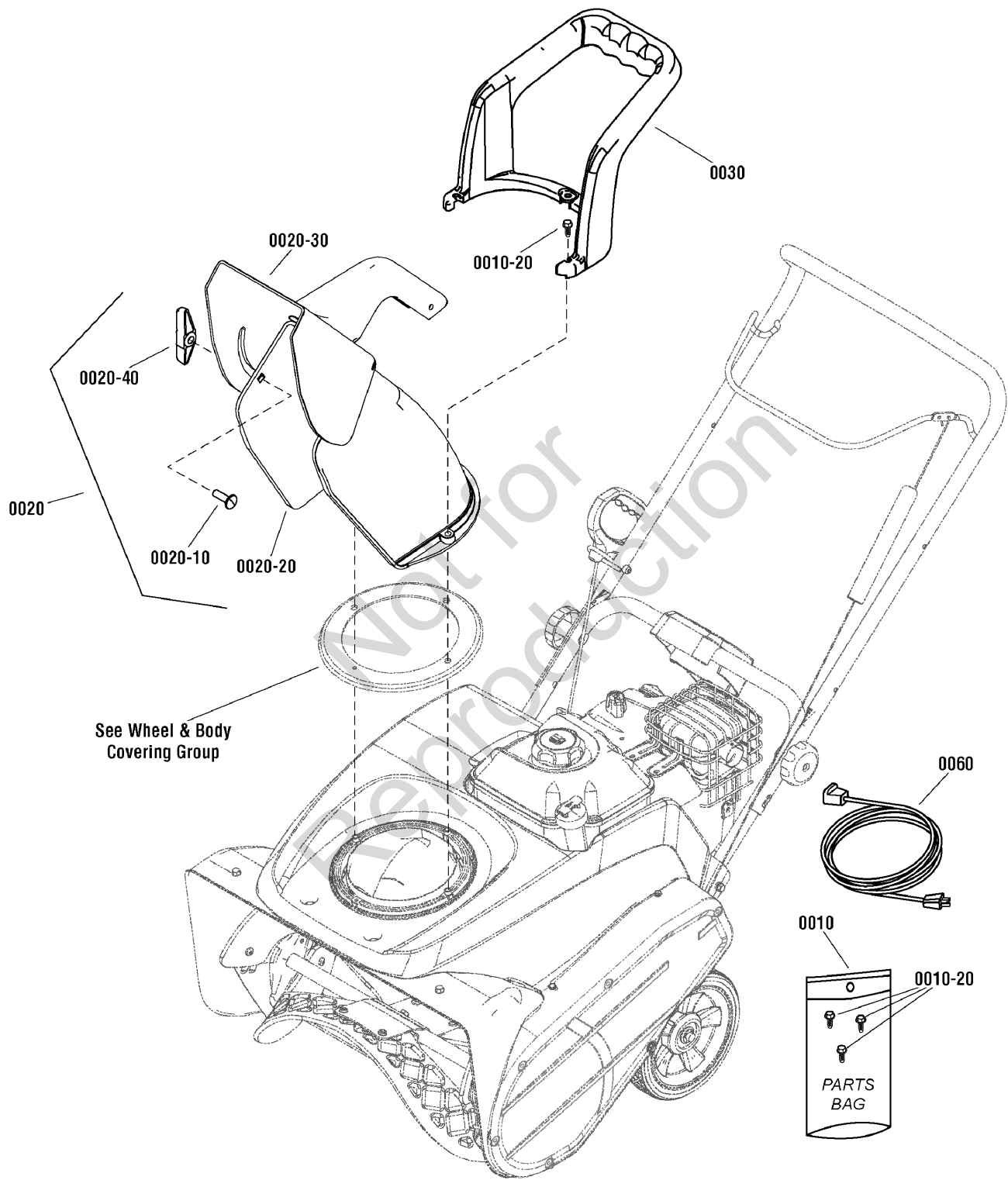
## Auger Drive Group

---

Item	Part No	Qty	Description
0010	1739730	1	PULLEY, Driven
0020	1739179	1	PULLEY, Driver
0030	1739526	1	ARM, Idler, Drive
0040	722378	1	IDLER, Plastic Ball Bearing
0050	1739338	1	BELT, Drive
0060	720192	1	CAPSCREW, Hex Head, 3/8-16 x 1-1/2
0070	7091299	1	NUT, Nylock, 3/8
0080	1739709	1	SPACER, Idler Arm
0090	1931318	1	BOLT, Carriage, Short Neck, 1/4-20 x 7/8 G5
0100	7091253	1	WASHER, Flat, .281 X 3/4 x 1/2
0110	7091603	1	NUT, Nylock, 1/4
0120	727331	1	CABLE, Handle
0130	1739935	1	BOOT, Clutch Spring
0140	1750226	1	SPRING, Idler
0150	1750315	1	SPRING, Extension
0160	1750329	1	BRACKET, Cable Guide
0170	1750447	2	SCREW, Hex Washer Head, Trilob, 1/4-20 x 1/2
0180	1750594	1	CAPSCREW, Hex Shoulder, 1/4 x 3/4
0190	7090376	1	NUT, Locking, #10
0200	724621	1	SPOOL CABLE, Auger Control
0210	720016	1	CAPSCREW, Hex Head, 3/8-24 x 1
0220	22237	1	WASHER, Locking, 3/8

Not for  
Reproduction

### Footnotes:





## Chute Group - Manual

---

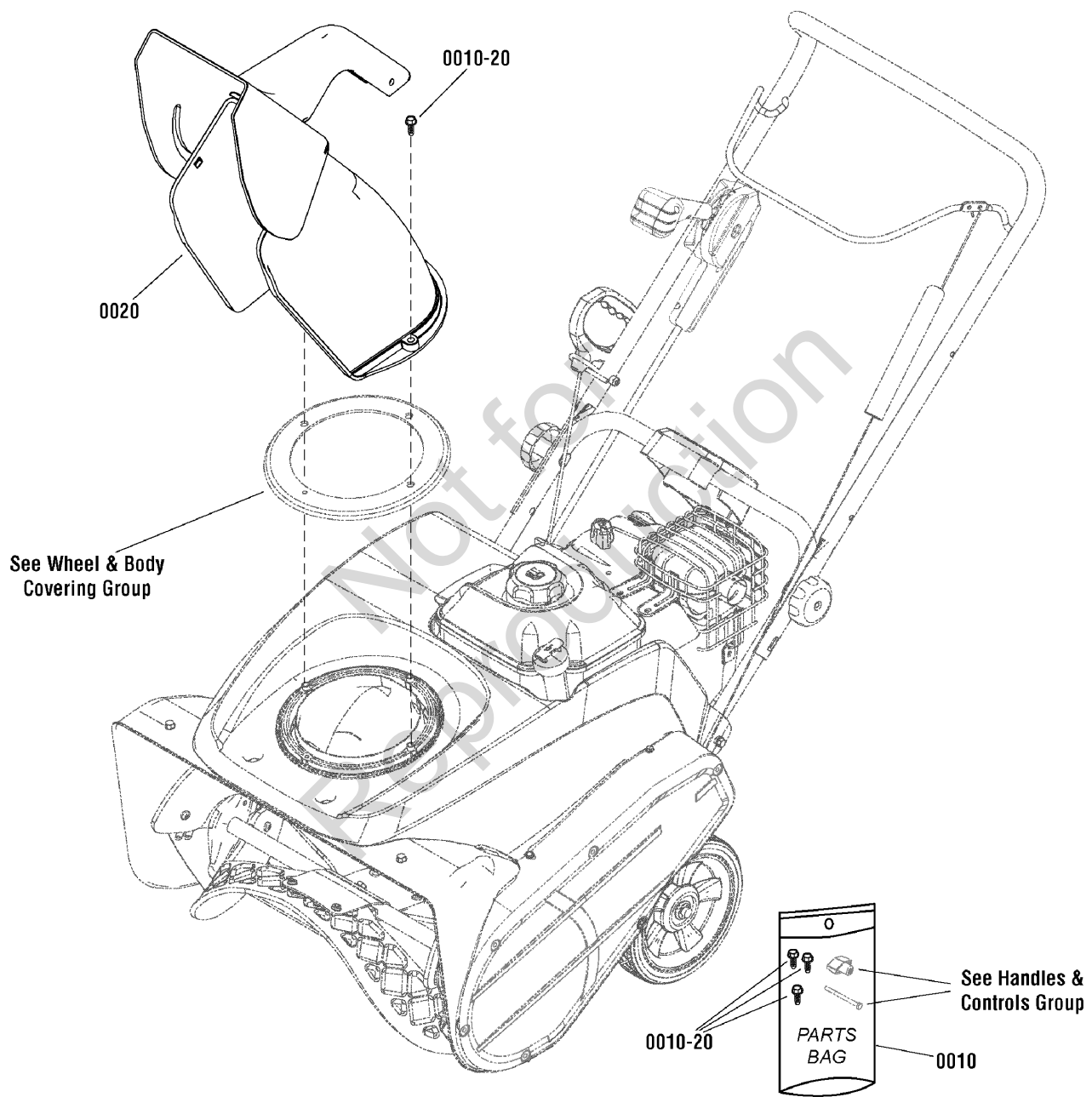
Item	Part No	Qty	Description
0010	1751007	1	PARTS BAG
0010-20	7900023	3	SCREW, Self Tapping, 1/4-15 x 1-1/4
0020	1739755	1	CHUTE ASSEMBLY, Manual (Incl. Ref. Nos. 0020-10, 0020-20, 0020-30 & 0020-40)
0020-10	1931335	1	BOLT, Carriage, 5/16-18 x 1 G5
0020-20	----	1	* CHUTE (Not available separately)
0020-30	----	1	* DEFLECTOR, Chute (Not available separately)
0020-40	7037544	1	KNOB, Wing, 5/16-18
0030	1739692	1	HANDLE, Chute Rotation
0060	724865	1	CORD, 10FT

Not for  
Reproduction

### Footnotes:

\* Not a servicable part, order complete Chute Assembly (item 0020).

**Chute Group - Remote**



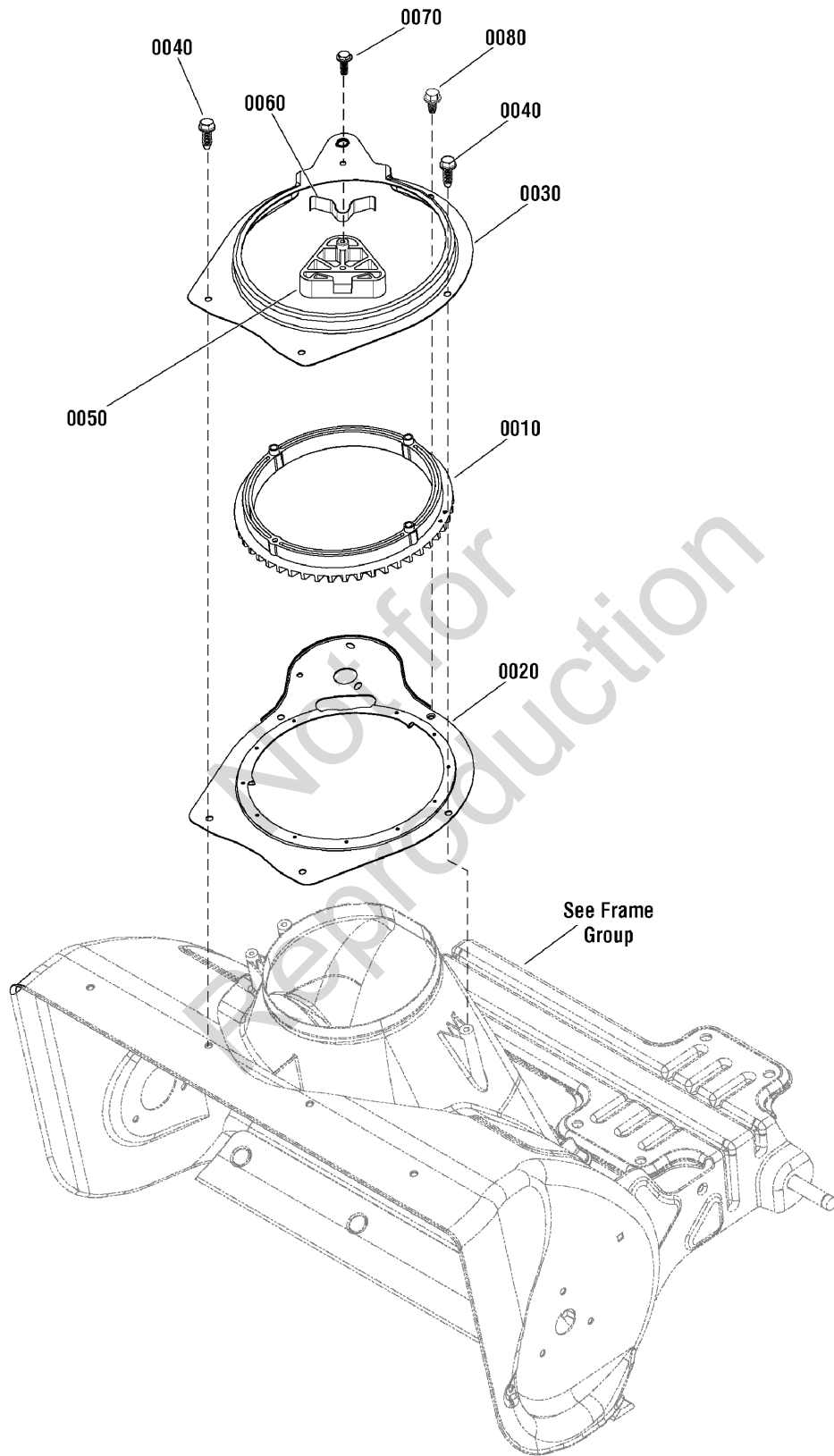
## Chute Group - Remote

---

<b>Item</b>	<b>Part No</b>	<b>Qty</b>	<b>Description</b>
0010	1751006	1	PARTS BAG
0010-20	1751399	3	SCREW, Hex Washer Head, HI-LO, 1/4-15 x 1-1/4
0020	1739522	1	CHUTE ASSEMBLY

Not for  
Reproduction

Footnotes:



## Chute Rotation Group - Manual

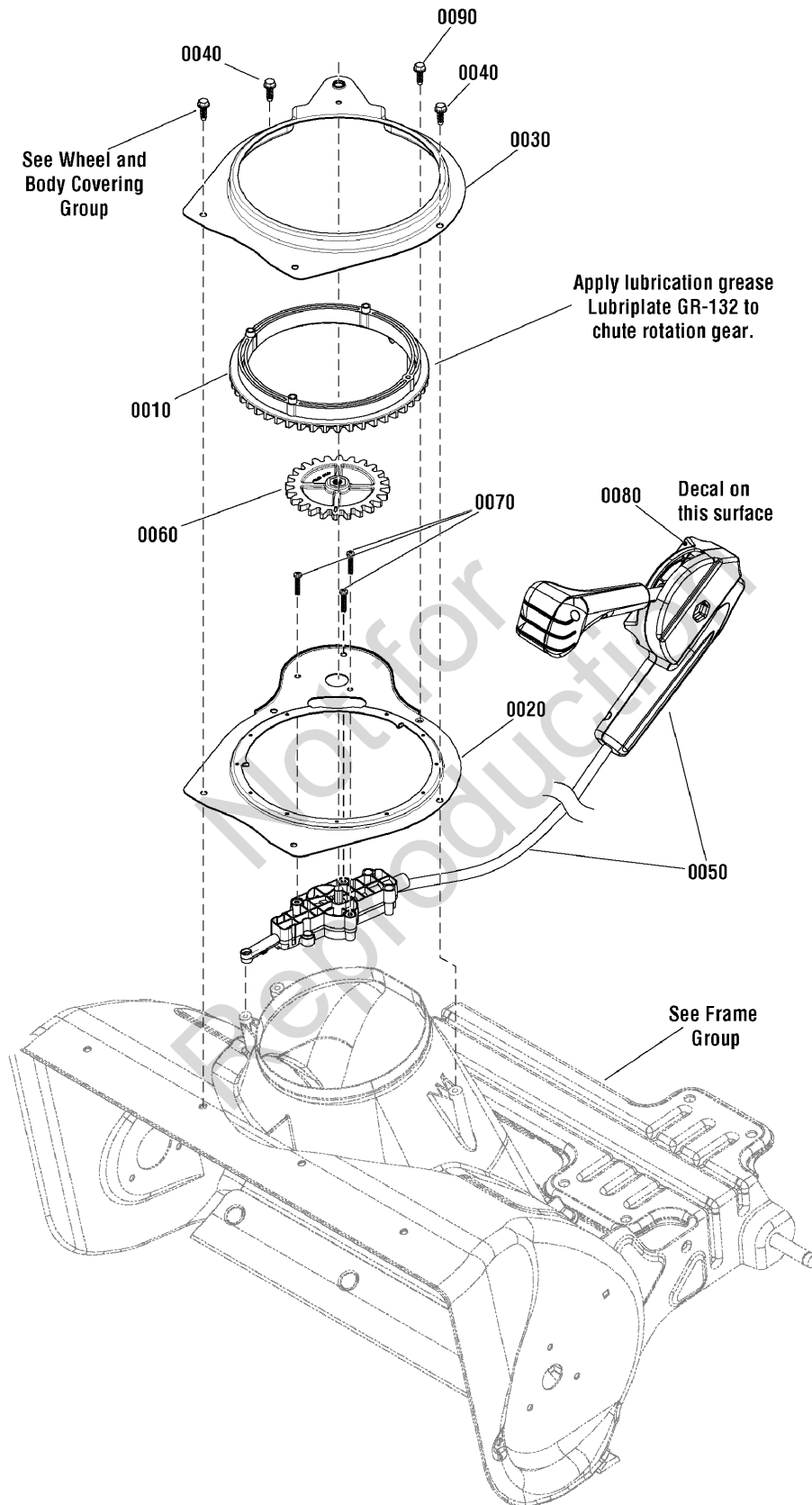
---

Item	Part No	Qty	Description
0010	1739123	1	GEAR, Chute Rotation
0020	1739364	1	PLATE, Chute Mounting
0030	1739365	1	RETAINER, Chute Gear
0040	1750444	2	SCREW, Hi-Low, 1/4-15 x 3/4
0050	1739294	1	BLOCK, Stop
0060	1739293	1	SPRING
0070	1960001	1	SCREW, Hex Washer Head, Plast., 10-14 x 5/8
0080	1750447	1	SCREW, Hex Washer Head, Trilob, 1/4-20 x 1/2

Not for  
Reproduction

### Footnotes:

## Chute Rotation Group - Remote



## Chute Rotation Group - Remote

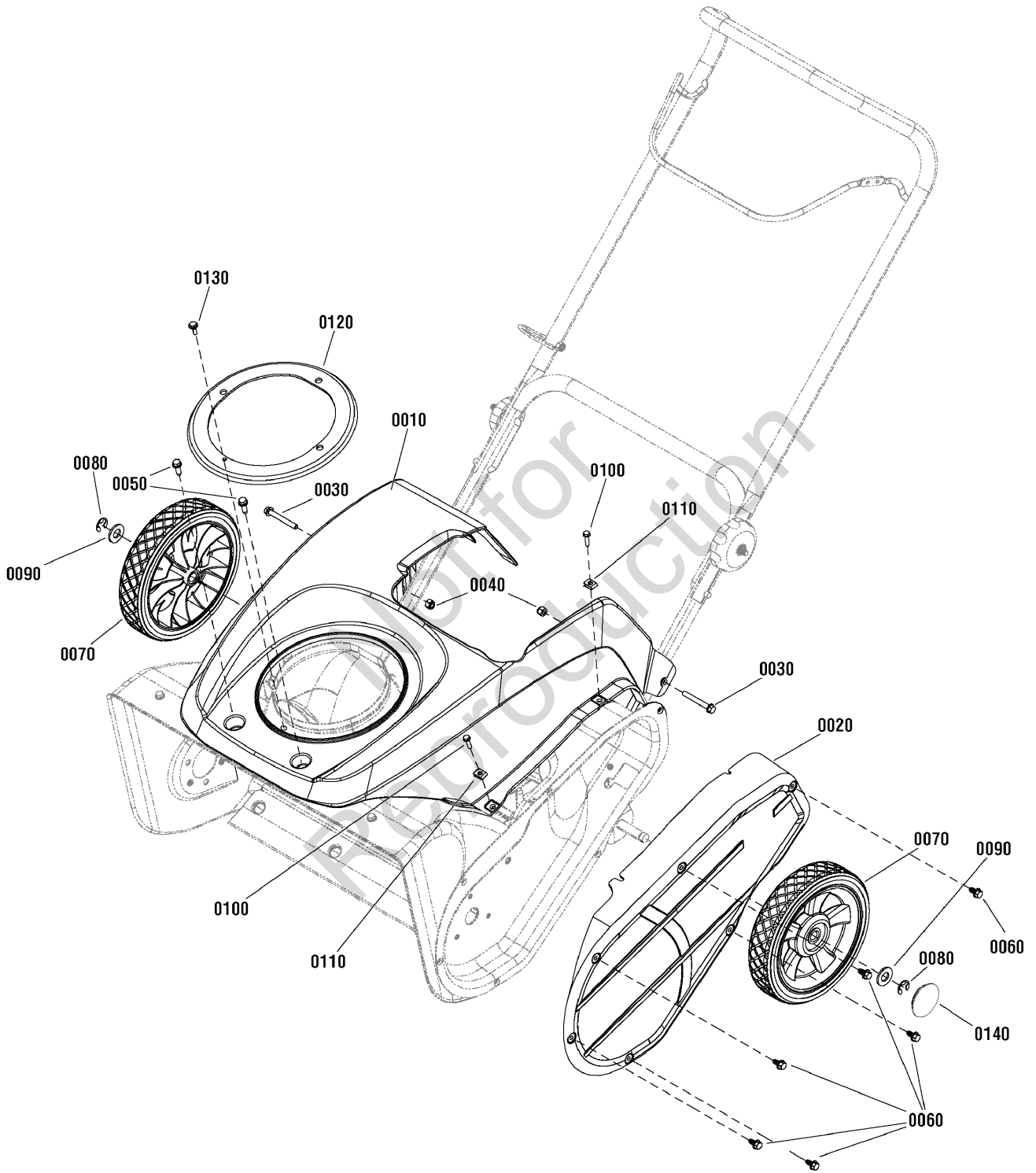
---

Item	Part No	Qty	Description
0010	1739123	1	GEAR, Chute Rotation
0020	1739364	1	PLATE, Chute Mounting
0030	1739365	1	RETAINER, Chute Gear
0040	1750444	2	SCREW, Hi-Low, 1/4-15 x 3/4
0050	1739754	1	CHUTE ROTATION ASSEMBLY, Remote
0060	1738955	1	GEAR, Chute Rotation
0070	7100225	4	SCREW, Phillips Pan, Plastite, 8-16 x 1
0080	1739976	1	DECAL, Chute Rotation
0090	1750447	1	SCREW, Hex Washer Head, Trilob, 1/4-20 x 1/2

Not for  
Reproduction

### Footnotes:

**Wheel & Body Covering Group**





## Wheel & Body Covering Group

---

Item	Part No	Qty	Description
0010	1739959	1	COVER, Top
0020	1739599	1	COVER, Drive Case
0030	1750777	2	CAPSCREW, Hex Washer Head, 1/4 x 20 x 2
0040	7091603	2	NUT, Nylock, 1/4
0050	1750444	2	SCREW, Hi-Low, 1/4-15 x 3/4
0060	1750447	6	SCREW, Hex Washer Head, Trilob, 1/4-20 x 1/2
0070	311237	2	WHEEL, 2 x 8, Plastic 1/2, SILVER
0080	192050	2	E-RING, Axle, 1/2
0090	7025074	2	WASHER, Flat, 17/32 x 5/8
0100	1750638	2	CAPSCREW, Hex Washer Head, 10-24 x 3/4
0110	885118	2	NUT, U-Style Speed, #10
0120	1739752	1	COVER, Chute
0130	1960001	1	SCREW, Hex Washer Head, Plastite, 10-14 x 5/8
0140	1751540	2	HUBCAP

Not for  
Reproduction

### Footnotes:

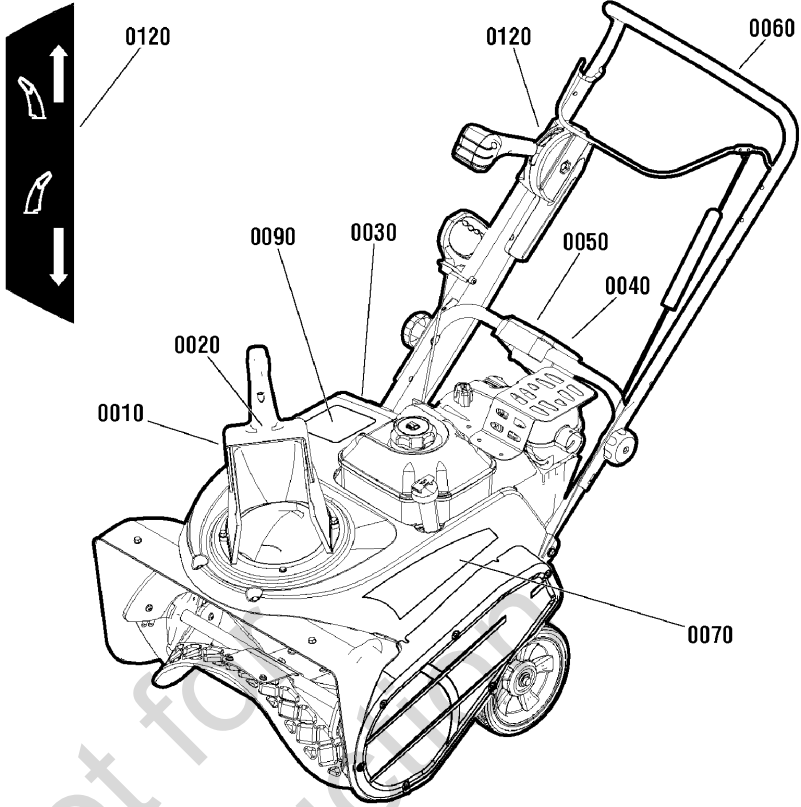
**⚠ DANGER**  
**Amputation hazard**  
 Contact with moving parts inside chute will cause serious injury.  
 • Shut off engine before unlogging discharge chute.  
 • Use clean-out tool, not hands!

**Risque d'amputation**  
 Tout contact avec des pièces en mouvement à l'intérieur de la goulotte provoquera de graves blessures.  
 • Arrêter le moteur avant de dégager la goulotte d'éjection.  
 • Utiliser l'outil de dégagement, pas les mains!

1707085

0020

1727207



**⚠ DANGER**

Shut off engine and remove key before performing maintenance or repair work.		Arrêter le moteur et retirer la clé avant d'effectuer tout entretien ou toute réparation.
Read the operator's manual for operating and safety instructions.		Lire les consignes de sécurité et d'utilisation dans le manuel d'utilisation.
<b>Thrown Objects Hazard</b> • Never direct discharge chute towards persons or property.		<b>Danger objets projetés</b> • Ne jamais diriger la chute en direction des personnes ou biens matériels.
<b>Amputation Hazard</b> • Contact with auger will cause serious injury. • Keep hands, feet and clothing away. • Keep bystanders away.		<b>Risque d'amputation</b> • Tout contact avec la tarière provoquera de graves blessures. • Tenir vos pieds, vos mains et vêtements à distance. • Tenir les spectateurs à distance.

1729967

0010

0040

0050

4

5

Plug in extension cord or Pull rope  
Branchez le cordon d'extension ou tirez la corde

Push Button to Start  
Appuyez sur le bouton pour démarrer

4

5

**STEPS TO EASY STARTING**  
**ÉTAPES POUR UN DÉMARRAGE FACILE**

1 Turn engine ON / Mettez le moteur sur « ON » (marche)

2 Turn choke knob to CHOKE / Tournez le bouton de l'étrangleur sur « CHOKE »

3 Push Button to Start / Appuyez sur le bouton pour démarrer

After engine starts, turn to RUN  
Une fois le moteur en marche, mettez-le sur « RUN »

0030

1 2 3

0060

## Decals Group

---

Item	Part No	Qty	Description
0010	1739966	1	DECAL, Chute, FR-EN
0010	1739967	1	DECAL, Chute, International (CE/Export Only)
0020	1737865	1	DECAL, Danger, Chute, FR/ENG
0020	1727207	1	DECAL, Danger, Chute, International (CE/Export Only)
0030	1739970	1	DECAL, 1-2-3 Start, FR-EN
0030	1739971	1	DECAL, 1-2-3 Start, International (CE/Export Only)
0040	1750734	1	DECAL, 4, START, FR-EN
0040	1750735	1	DECAL, 4, START, International (CE/Export Only)
0050	1750736	1	DECAL, 5, START, FR-EN
0050	1750737	1	DECAL, 5, START, International (CE/Export Only)
0060	1739977	1	DECAL, Bail Engagement
0070	1739983	2	DECAL, Snapper, LH, RH
0090	1739985	1	DECAL, Snapper, Top, SS822EX
0120	1739976	1	DECAL, Chute Rotation (Remote Models Only)

Not for  
Reproduction

### Footnotes:



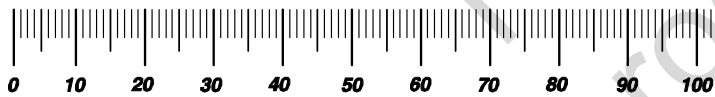




# Hardware Identification & Torque Specifications

Torque Specification Chart								
FOR STANDARD METRIC MACHINE HARDWARE (Tolerance ± 20%)								
Property Class	5.6		8.8		10.9		12.9	
	Class 5.6		Class 8.8		Class 10.9		Class 12.9	
Size Of Hardware	in/lbs		in/lbs		in/lbs		in/lbs	
	ft/lbs	Nm.	ft/lbs	Nm.	ft/lbs	Nm.	ft/lbs	Nm.
M3	5.88	.56	13.44	1.28	19.2	1.80	22.92	2.15
M4	13.44	1.28	30.72	2.90	43.44	4.10	52.56	4.95
M5	26.4	2.50	60.96	5.75	5.97	8.10	7.15	9.7
M6	44.64	4.3	7.3	9.9	10.3	14	12.1	16.5
M7	5.2	7.1	12.1	16.5	16.9	23	19.9	27
M8	7.7	10.5	17.7	24	25	34	29	40
M10	15	21	35	48	50	67	59	81
M12	26	36	61	83	86.2	117	103	140
M14	42	58	101	132	136	185	162	220
M16	64	88	147	200	210	285	250	340
M18	89	121	202	275	287	390	346	470
M20	126	171	290	390	405	550	486	660
M22	169	230	390	530	559	745	656	890
M24	217	295	497	375	708	960	840	1140
M27	320	435	733	995	1032	1400	1239	1680
M30	435	590	995	1350	1401	1900	1681	2280
M33	590	800	1349	1830	1902	2580	2278	3090
M36	759	1030	1740	2360	2441	3310	2935	3980
M39	988	1340	2249	3050	3163	4290	3798	5150

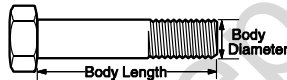
The guides and ruler furnished below are designed to help you select the appropriate hardware.



Nut, M8

Thread Diameter (mm)  
Inside Diameter (in)  
Threads per inch

Nut, 1/2-16



Screw, M8- 1.25 x 25

Thread Diameter (mm)  
Body Diameter  
Distance between threads (mm)  
Threads per inch  
Body Length (mm)  
Body Length (in)

Screw, 1/2- 16 x 2



## Standard Hardware Sizing

When a washer or nut is identified as 1/2" (M8), this is the *Nominal size*, meaning the *inside diameter* is 1/2 inch (8mm metric thread diameter); if a second number is present it represents the *threads per inch* (distance between threads).

When bolt or capscrew is identified as 1/2 - 16 x 2" (M8 - 1.25 x 50), this means the *Nominal size*, or body diameter is 1/2 inch (8mm metric thread diameter), the second number, 16, represents the *threads per inch*, (1.25 thread diameter). The final number is the body length of the bolt or screw, 2 inches (50mm).

Torque Specification Chart						
FOR STANDARD MACHINE HARDWARE (Tolerance ± 20%)						
Hardware Grade	No Marks		SAE Grade 5		SAE Grade 8	
	SAE Grade 2		SAE Grade 5		SAE Grade 8	
Size Of Hardware	in/lbs		in/lbs		in/lbs	
	ft/lbs	Nm.	ft/lbs	Nm.	ft/lbs	Nm.
8-32	19	2.1	30	3.4	41	4.6
8-36	20	2.3	31	3.5	43	4.9
10-24	27	3.1	43	4.9	60	6.8
10-32	31	3.5	49	5.5	68	7.7
1/4-20	66	7.6	8	10.9	12	16.3
1/4-28	76	8.6	10	13.6	14	19.0
5/16-18	11	15.0	17	23.1	25	34.0
5/16-24	12	16.3	19	25.8	29	34.0
3/8-16	20	27.2	30	40.8	45	61.2
3/8-24	23	31.3	35	47.6	50	68.0
7/16-14	30	40.8	50	68.0	70	95.2
7/16-20	35	47.6	55	74.8	80	108.8
1/2-13	50	68.0	75	102.0	110	149.6
1/2-20	55	74.8	90	122.4	120	163.2
9/16-12	65	88.4	110	149.6	150	204.0
9/16-18	75	102.0	120	163.2	170	231.2
5/8-11	90	122.4	150	204.0	220	299.2
5/8-18	100	136	180	244.8	240	326.4
3/4-10	160	217.6	260	353.6	386	525.0
3/4-16	180	244.8	300	408.0	420	571.2
7/8-9	140	190.4	400	544.0	600	816.0
7/8-14	155	210.8	440	598.4	660	897.6
1-8	220	299.2	580	788.8	900	1,244.0
1-12	240	326.4	640	870.4	1,000	1,360.0

## NOTES

- These torque values are to be used for all hardware excluding: locknuts, self-tapping screws, thread forming screws, sheet metal screws and socket head setscrews.
- Recommended seating torque values for locknuts:
  - for prevailing torque locknuts - use 65% of grade5 torques.
  - for flange whizlock nuts and screws - use 135% of grade 5 torques.
- Unless otherwise noted on assembly drawings, all torque values must meet this specification.

## Common Hardware Types

Hex Head Capscrew



Washer



Carriage Bolt



Lockwasher



Hex Nut



## Wrench & Fastener Size Guide

1/4" Bolt or Nut Wrench—7/16"	5/16" Bolt or Nut Wrench—1/2"	3/8" Bolt or Nut Wrench—9/16"	7/16" Bolt or Nut Wrench (Bolt)—5/8" Wrench (Nut)—11/16"	1/2" Bolt or Nut Wrench—3/4"
M6 Bolt or Nut Wrench—10mm	M8 Bolt or Nut Wrench—13mm	M10 Bolt or Nut Wrench—17mm	M12 Bolt or Nut Wrench—19mm	M14 Bolt or Nut Wrench—22mm

**Parts Manual for**

# **SNAPPER®**

## **SINGLE STAGE SNOW THROWER 22" 8TP & 9TP (2010)**

Not for  
Reproduction

IT IS THE POLICY OF BRIGGS & STRATTON CORP TO IMPROVE ITS PRODUCTS WHENEVER IT IS POSSIBLE AND PRACTICAL TO DO SO. WE RESERVE THE RIGHT TO MAKE CHANGES OR ADD IMPROVEMENTS AT ANY TIME WITHOUT INCURRING ANY OBLIGATION TO MAKE SUCH CHANGES ON PRODUCTS

**Briggs & Stratton Yard Power Products Group**

535 Macon Road  
McDonough, GA, 30253 U.S.A.  
800-935-2967

[www.snapper.com](http://www.snapper.com)

Copyright © 2010 Briggs & Stratton Corporation  
Milwaukee, WI USA. All Rights Reserved

**Manual No. 7104731**

**Revision: - 8/24/2010**